

Computerized Toilet Manual

I. Safety Notes

- Please read the manual carefully before use in order to ensure correct use the product
- To improve the performance of the product, the specification may change without notice.
- To prevent injury to users and other person, please follow the following instructions.

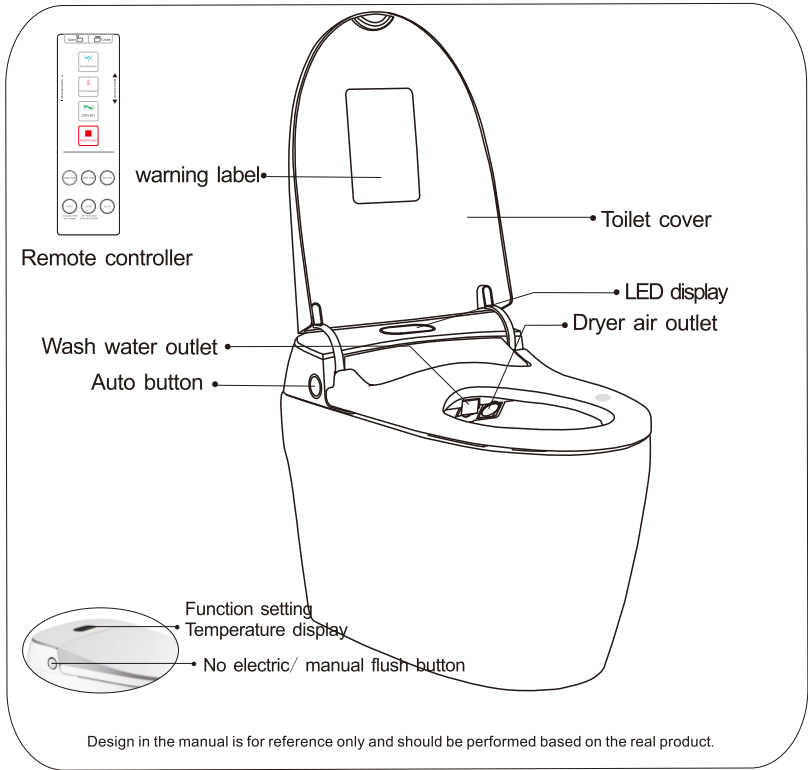
Warning

The represented content is warning you how to avoid injury

Caution

The represented content is informing you must follow or avoid operation in order to prevent the damage of the equipment or other properties.

Symbols	Warning
	Dismantling, repair and alteration are absolutely forbidden without permission, or may cause the fire or electric shock.
	Please do not spray water or cleaning agent on the product or power plug which may lead to electric shock and malfunction.
	Do not use wet hand to touch power plug which may lead electric shock.
	Ensure the water is clean and the water pressure as required.
	1. As one of electric appliance, the product should not be placed at a place with easy access to water splashing or in rather moisture condition. 2. The socket load should be 1300w and up. 3. The battery for the remote control will be 3 pcs 1.5V 4. If the power cord is damaged, it must be replaced by special cord from manufacturer or our agent.



warning

1. Please don't stand on the main body as well as the cover and seat
2. Please don't use banana oil, gasoline, medicaments to clean the toilet.
3. please shift to lower temperature when you sit on the toilet for a long time.
4. Please don't place upside down when connect power without water supply to avoid dry ashing.

II Safety caution

prohibited

Must follow

No wet hand

No dismantling

No flame

No water spraying

Must be earthed

Must follow

Notes for the symbol

Do not use wet hand to plug in which may lead to electric shock

禁止拆卸
Dismantling, repair and alteration of the product are forbidden

! please disconnect the plug if there's abnormal smell or sound.

please do not use damaged socket or plug which may lead to electric shock, short out and fire

Open flame and smoking are prohibited close to the toilet which may lead to fire

please pay attention to low temperature burn if you sit on heated seat long time especially for kids, the aged, patients and drunk people etc.

! Please do not stand on the toilet or put heavy stuff on it.

! Please ensure the plug is earth ground.

! Please avoid nozzle pollution by feces which may cause smell or malfunction

! Please disconnect the power plug when it is thunderstorm weather

禁止洒水
Please do not spray water or cleaning agent on the product and power plug which may lead to electric shock or and malfunction

! Please ensure the input water is clean.

! please do not close the lid and seat violently

! Please do not lean on the seat cover and operation panel which will lead to the damage of the product

! Please do not put many plug on one patch board which may lead power overload.

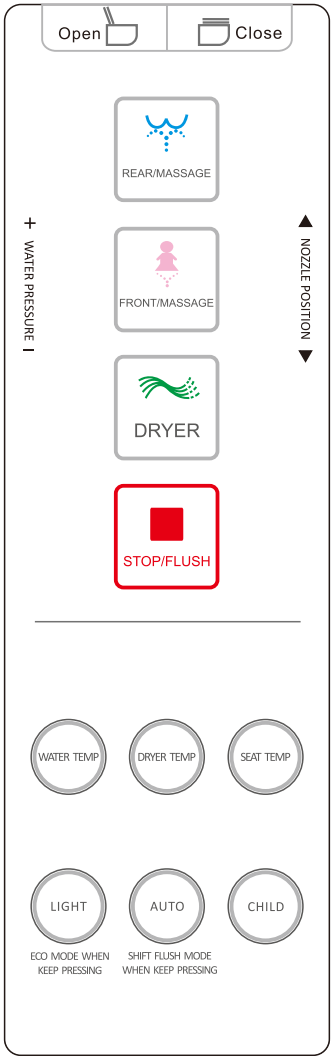
Computerized Toilet Manual

III Operation instruction

Note: Please read content below carefully when do not how to use

Note:

When first time use, need to match code if remote controller do not work



Stop/Flush

Press this button or when body left seat it will stop other function and start to flush the toilet automatically. When seat sensor not occupied, it will flush the toilet if press this "flush" button.

Posterior wash / Moving wash

When sit and press this button, the nozzle will clean itself for 2 seconds. Then it begins posterior flushing. The whole flushing lasts for 2 minutes. If you press this button again during flushing, the spray will move forwards and backwards. It will bring you more comfortable flushing experience. Press "water pressure" during flushing can adjust flushing strength. Press "stop" to finish flushing any time if you want.

Dryer temp

Press this button during drying, the drying temperature can adjust at 4 levels from

Seat temperature

Press this button to adjust seat temperature according to your preference. There're 4 level to adjust

Child

Press this button once, will hip wash 15 seconds, move wash 15 seconds and drying 1 minute. Water temp, dryer temp and water pressure are lowest level to protect child. This function still can be active even didn't seat on the sensor.

Auto

Press this button once, will rear wash 30 seconds, move wash 30 seconds and drying 3 minutes, then stop. Or stop automatically when left the seat lid. If press "Front wash" first, then press "Auto", will front wash 30 seconds, move wash 30 seconds and drying 3 minutes, then stop.

Bidet / Moving wash

Same operation as posterior/moving wash button, the only difference is the flushing position. This is designed for female users.

Dryer

Press this button, drying function will be active. Will stop automatically after 5 minutes or leaving the seat. Press "Dryer temp" button to adjust dryer temperature, 5 levels to choose.

Water pressure

This button can adjust flushing strength from strong (red indicator lights) medium (pink indicator) to soft (blue indicator)

Nozzle position adjustment

Adjust nozzle position forward or backward according to your preference and convenience during washing. Total 5 position to adjust

Save electricity

Press this button and the indicator light is on, it will be in intelligent power saving mode which will last 8 hours. When body seated, it will stop this function automatically. Use this function when you not use the bidet, it will save 40% energy.

Light/ Eco mode

This button is light on/off function button. If keep press this button for 5 seconds, eco mode will be activated. In eco mode, when seat on the seating lid, eco mode will turn off automatically, and turn on when left the seating lid. (In eco mode, water and seat will stop heating, whole product is in sleep state)

Suspended induct flip cover

Put your foot on the inductive sensor at side of the toilet once, cover will rise; twice, seating ring will rise;

third time, toilet will flush, seating ring and cover will close.

When the cover and seating ring is open, will close automatically when there is no any action for 90 seconds.

Instructions of other functions

1. Intelligent toilet flush method: Flush automatically when people leave; When nobody seat on the toilet, press "STOP/FLUSH" button to flush; When there is no electricity, press the side button to flush



2. When seat on the toilet, press any wash button, nozzle will clean itself for 3 seconds, then come out to wash; when left the toilet, nozzle will clean itself again for 3 seconds.



3. Automatic deodorization There is bamboo charcoal deodorant device inside, can dispel the odor automatically.

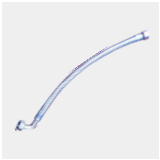


Installation and testing instruction

packing list

Tools needed :

- Monkey Wrench
- Philips screwdriver
- Glass glue
- Tape measure
- Pencil or marker pen
- Glass glue gun



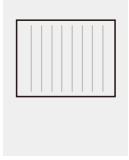
special hose



water input angle valve

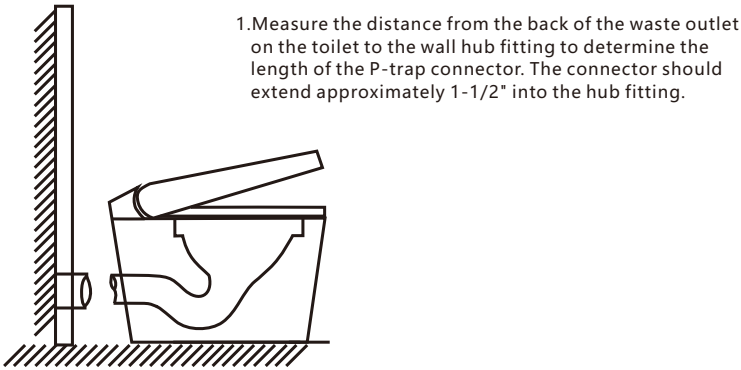


Remote with 3 battery

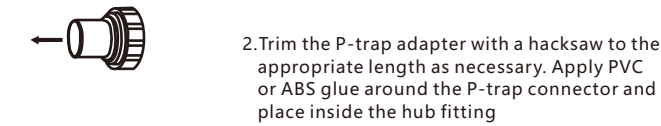


Manual

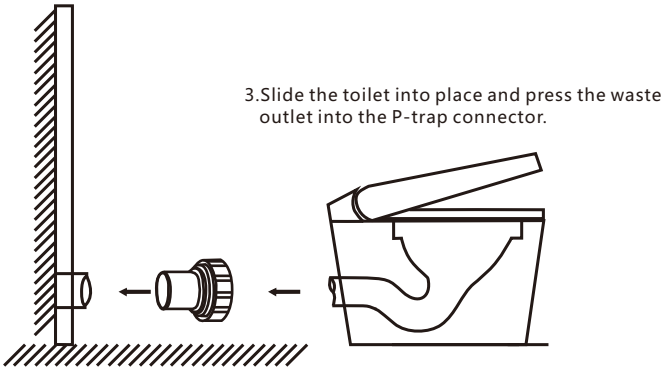
Installation guide



1.Measure the distance from the back of the waste outlet on the toilet to the wall hub fitting to determine the length of the P-trap connector. The connector should extend approximately 1-1/2" into the hub fitting.

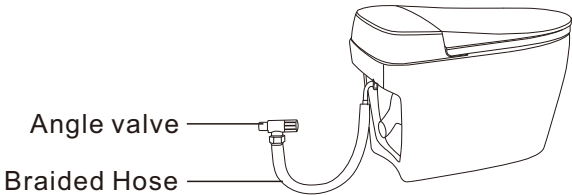


2.Trim the P-trap adapter with a hacksaw to the appropriate length as necessary. Apply PVC or ABS glue around the P-trap connector and place inside the hub fitting



3.Slide the toilet into place and press the waste outlet into the P-trap connector.

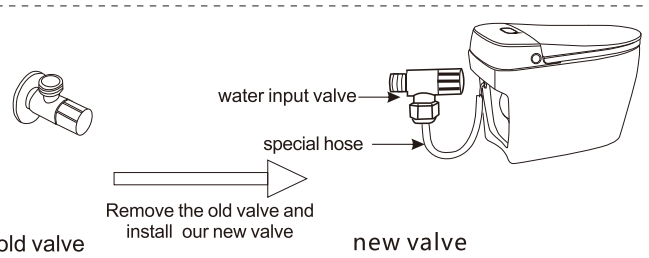
4.Connect the water supply tubes to the toilet. Turn on the water supply and flush the toilet several times to check for any leaks around the back or base.



5.Finish your installation by applying latex caulk or tile grout around the base of the toilet

Water pipe connection and installment

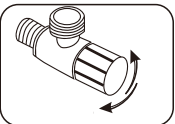
1. Install the new angle valve and connect to the one end of special hose.
2. When power is on , adjust the valve and control the water pressure under 7.5kgs.



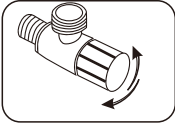
Note:
The toilet uses spiral siphon jet flushing technology .If the water pressure is high in your area(over 3kgs water pressure), there may some splash and noise when flushing . Then please control valve and adjust the water pressure.



Spiral siphon jet flushing



control valve



close the valve

Reminder :

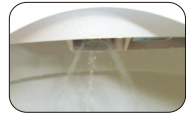
It is normal phenomenon that the nozzle flows when open angle valve for the new products and it will be normal after recover power supply .

Please stop power and water supply when dismantling.

Installation and testing instruction

V. Trial operation

1. After finished connection of water supply, open the angle valve and switch on the power.
The magnetic valve will flush the toilet and the nozzle come out which is the self-inspection process.
The water temperature indicator flashes which means the water tank is getting water and after 40 seconds the indicator stop flash which means finish water input.
(It is normal for the nozzle delay the spray for 10-15 seconds for the first time use)



normal phenomenon

Note: It is normal phenomenon for the nozzle comes out and flows when open the angle valve and get the water supply. After power is on , the nozzle will go back and stop flowing.

Function confirmation

- 1.Please check each function according to the manual.
2. Switch on the power and put a wet towel or cloth on sensor area.
After 1 minutes, the water will be heated as set temperature and the warm air will work when you press the dry key.
3. when there is no power supply, no function can work except the non-electric flush toilet.



put a wet towel on sensor area

Pair remote controller: When seat on the toilet:

Step 1: Keep pressing side button for 5 seconds till heard “BEEP”, the LED display will blink at the same time, now the toilet is waiting for pair.
Step 2: Press any button on the remote controller, will heard “BEEP”, and LED display stop blink, pair finished.



The remote controller and toilet were already paired before leave factory; if need to change remote controller, then need to be paired to use.

VI. Maintenance

Main body cleaning

1. Clean with foam rubber or soft dry cloth with mild detergent.
- 2.Note : Do not sue thinner, benzolin,detergent, chemical ,pesticide, reodorant to wipe.

Nozzle cleaning

- 1.Please clean the nozzle frequently.
Press “front wash or rear wash” button when no body seated so that the nozzle will come out .Then clean it with toothbrush or soft cloth.
2. Please don't over pull the nozzle .Press the “stop” button after finished cleaning so that the nozzle will go back automatically.



filtering mesh cleaning

- 1.Stop the water supply.
2. Open the T joint water input cap.
3. Take out the filtering mesh and clean it with toothbrush.
4. Put it back and recover the water supply.



take down the cap



clean the mesh

Not use for long time -Drainage

1. Stop the power supply.
2. Stop the water supply.
3. Lift up the main body .
4. Screw out the drainage screw and drain out water.
5. Put the drainage screw back.



Lift up the seat cover



screw out the drainage screw

VII .Specification

Power Voltage		220V~240V 50~60Hz 1650W	heated seat	temperature	room temp/low 30°C/medium 35°C/high 40°C
water supply	water input	connect to the water pipe directly		heating power	40W
	water pressure	0.08MPa-0.75MPa (0.8kgf/cm ² -0.75kgf/cm ²)		safety device	temperature fuse
warm wash	rear wash water volumn	0.5L/min - 0.9L/min	warm air dryer	temperature	room temp/low 35°C/medium 40°C/high 45°C
	front wash water volumn	0.5L/min - 0.9L/min		heating power	200W
	tank volumn	1L		safety device	temperature fuse
	temperature	room temp/ low 33°C/medium 37°C/high 40°C		Other safety device earth leakage protector	
	heating power	1600W	power cord length 1.5m		
	safty device	floating switch / temperature fuse / water level sensor	Net weight 46kg		

Confirm the following points before the maintenance application.

phenomenon	inspection method	solution
Fail to run	power failure or forget to switch on	confirm the power is on
		reconnect the power
The nozzle donot spray orthe water do not flow smoothly	water supply failure or water tap shut off	check the water supply and turn on the valve
	filter mesh is jammed	check the filter mesh
	water outlet is jammed by limescale	clean the nozzle with toothbrush
water leakage	connection parts not tight	make the connection tight
low temperature for water or seat	temperature not set	reset the temperature

● Note

- 1.Please stop the water supply if the power is suddenly off on the process of using. The product will run self-checking system and recover after power on.
- 2.Please use our special angle valve and other accessories.