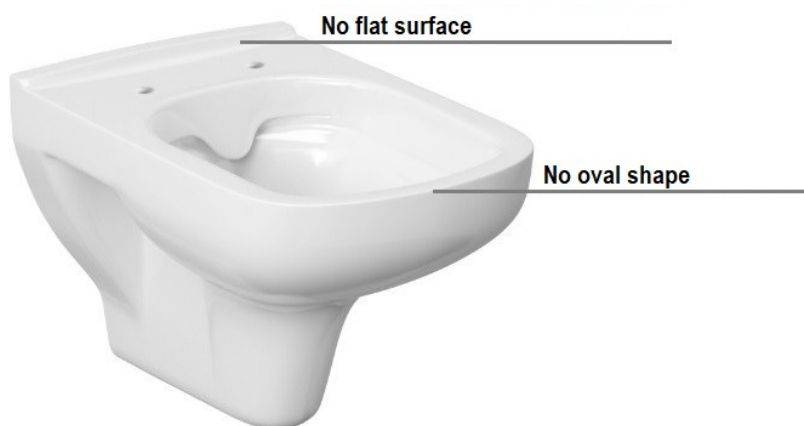


COMPATIBILITY OF TOILET BOWLS WITH MAJOR&MAKER SMART TOILET SEATS

GENERAL PRINCIPLES COMMON TO ALL MODELS

- **Bowl shape:** round - oval
- **Top surface of the toilet bowl where it meets the wall:** flat

An example of an improperly selected bowl



An example of a correctly selected bowl

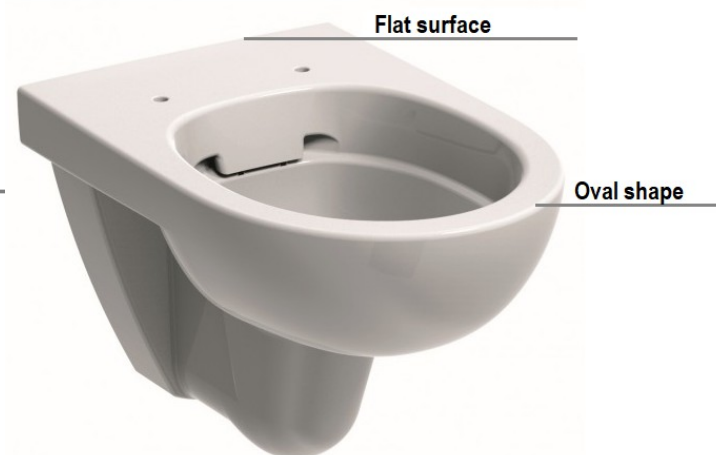


Diagram showing the correct dimensions of the toilet bowl compatible with Major&Maker toilet seat models: Crystal, Rubine

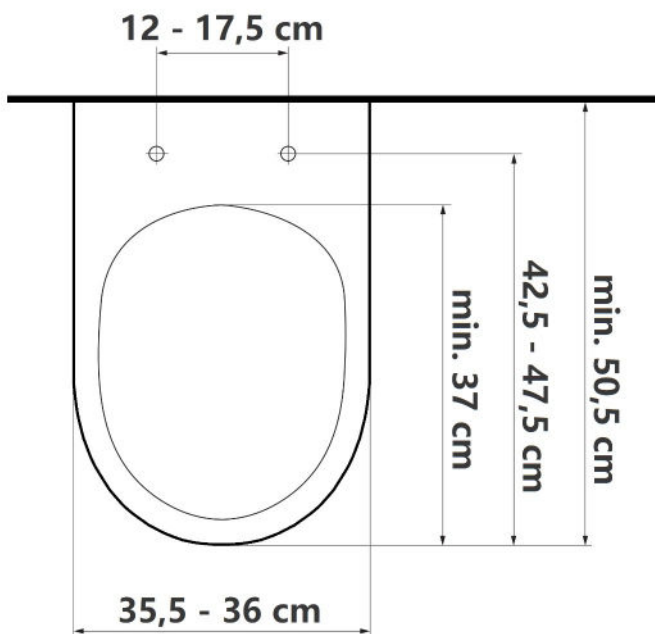
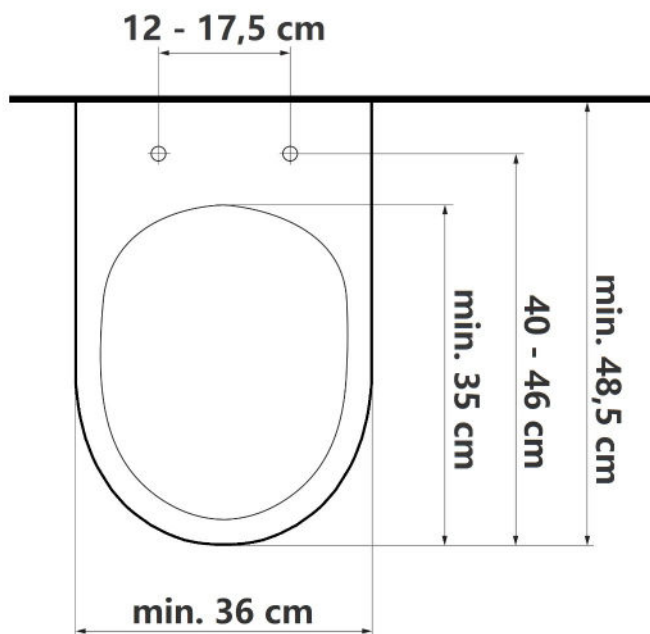


Diagram showing the correct dimensions of the toilet bowl compatible with Major&Maker toilet seat models: Diamond, Smaragd



When assembling a new toilet seat + bowl set, we encourage you to purchase a larger and more comfortable model of the **Major&Maker Rubine or Crystal** smart toilet seat.

Proven models of the best-suited wall-hung bowls for **Major&Maker Rubine and Crystal** smart toilet seats:

- Cersanit Larga Oval K120-003
- Roca Nexo A34664L000
- Roca Gap Round A34H0N2000
- Koło Nova Pro Premium M33130000
- Koło Nova Pro Rimfree M33120000
- Rak Ceramics Resort

Proven models of the best-suited floor standing bowls for **Major&Maker Rubine and Crystal** smart toilet seats:

- WC compact Villeroy & Boch Architectura 56861001
- WC compact Villeroy & Boch O.Novo Vita 4620R001
- WC compact Massi Decos MSK-2673ADU
- WC compact GoodHome Cavally
- WC compact Compacta Sensea

Parameters that a toilet bowl should meet to be compatible with **Major&Maker Rubine and Crystal** smart toilet seats:

- Spacing of holes in the bowl for mounting the toilet seat: 12 - 17.5 cm
- Length from the front edge of the bowl to the end of the bowl hole: minimum 37 cm
- Length from the front edge of the bowl to the mounting holes: 42.5 - 47.5 cm
- Length of the top flat surface of the bowl: minimum 50.5 cm
- Width of the toilet bowl: 35.5 - 36 cm
- Bowl as oval as possible

If you want to install a toilet seat on your currently smaller toilet seat, below are the parameters that the toilet bowl should meet to be compatible with the smaller models of **Major&Maker Diamond and Smaragd** smart toilet seats:

- Spacing of holes in the bowl for mounting the toilet seat: 12 - 17.5 cm
- Length from the front edge of the bowl to the end of the bowl hole: minimum 35 cm
- Length from the front edge of the bowl to the mounting holes: 40 - 46 cm
- The length of the top flat surface of the bowl: minimum 48.5 cm
- Width of the toilet bowl: minimum 36 cm
- Bowl as oval as possible

FINAL REMARKS

- We offer two types of devices:
 - Smart toilets, complete devices consisting of a toilet bowl with an integrated toilet seat and lid.
 - Smart toilet seats, for which you must purchase a suitable toilet bowl that is compatible on your own.
- Not all toilet models in the list above have been hand matched to our smart toilet seats, therefore we cannot guarantee that they will meet the customer's expectations. The models presented above are only our suggestions, and the final choice of the most appropriate toilet bowl lies with the buyer.
- NOTE: Some models of toilet bowls come in several different dimensions (under the same product model name).

When making a purchase, it is recommended to make sure that the dimensions given in the product description meet all the parameters presented above. If you have any doubts about the dimensions of individual models of toilet bowls, we recommend that you contact the seller of these products directly before making a purchase.
- In case of any doubts related to the compatibility of individual models of toilet bowls with Major&Maker toilet seats, please contact us at vivo@majormaker.pl or by phone 735 877 668.